



# PeopleSoft EPM Enterprise Warehouse

Cardinal Point Solutions

February 17, 2006

Bill Gibbard  
248.842.0019

[bgibbard@cardinalpointsolutions.com](mailto:bgibbard@cardinalpointsolutions.com)

Cardinal Point Solutions, LLC  
Proprietary & Confidential





# PeopleSoft EPM Warehouse Value

- Provides foundation for “One Version of the Truth”
- Provides the ability to conform data into a single database from disparate databases. (CRM, HR, FIN, SCM, etc.)
- Allows organizations to change data models to match ever changing strategic business structure not forced to report on operational models.
- Saves customers implementation time by providing standard data models for all PeopleSoft Transaction systems – It is not a reporting tool!

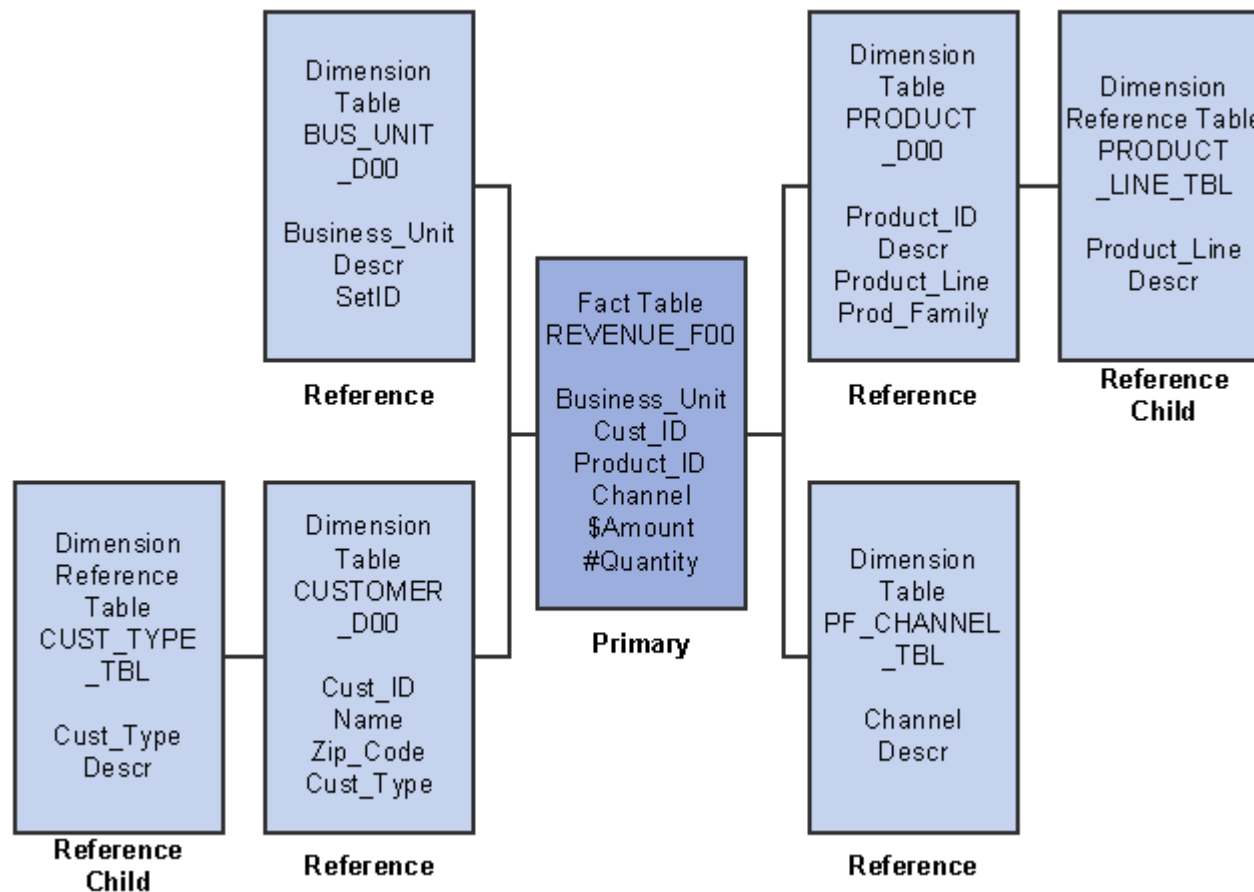
# Multidimensional Warehouse

- Allows analytics across subject matter areas
  - Uses Conformed dimensions - dimensions that mean the same thing in every possible fact table to which they can be joined—and therefore the same thing in every functional warehouse.
    - Common (Calendar, Time, Business Unit, Time Zone, Unit of Measure, Currency, Language)
    - Shared (Department, Item, Account, Person, Jobcode, etc.)
    - Subject Area (Billing Status –GL & Prof, Aging Category-Payables)

# Multidimensional Warehouse

- Facts – typically numeric values to quantify or calculate a company's activities. In star schema development it is the central table used to connect dimensions, so in some cases it can be a factless fact used to just join foreign keys of dimension tables.

# Star Schema

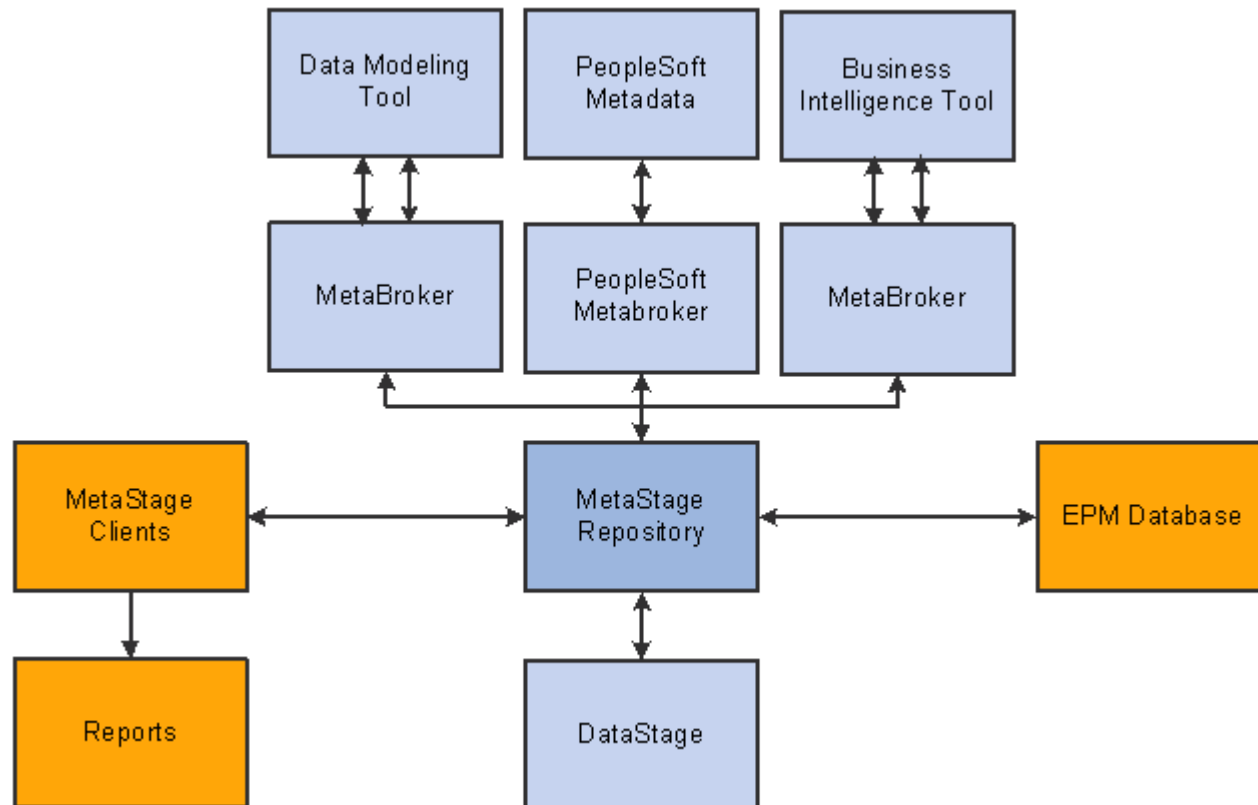




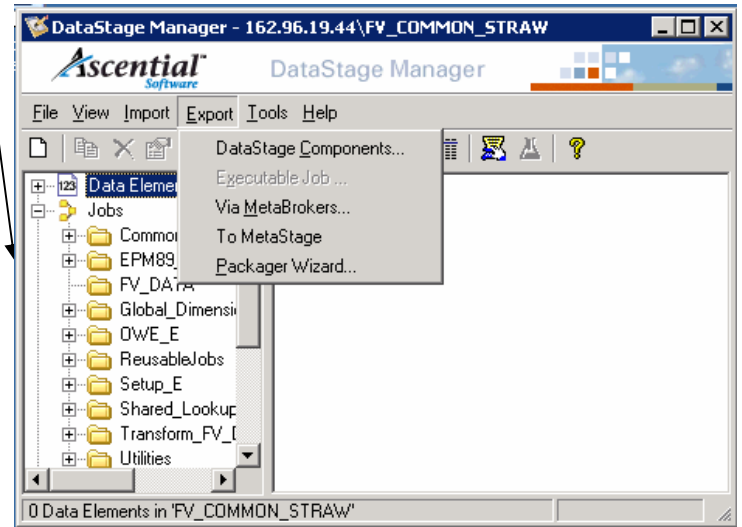
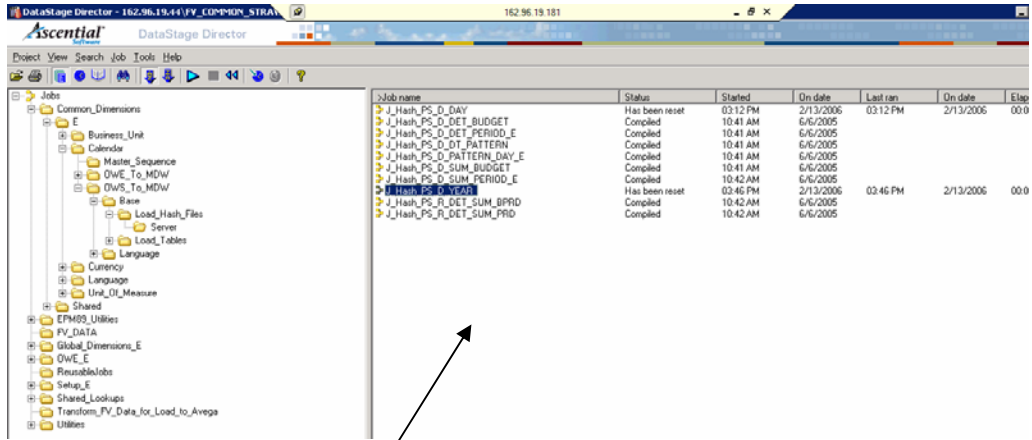
# Ascential DataStage

- PeopleSoft delivers predefined ETL jobs for use with Ascential DataStage. ETL Jobs are a collection of linked stages, data elements, and transformations that define how to **extract, transform, and load** data into a target database. Stages are used to transform or aggregate data, and lookup information. More simply, ETL jobs extract data from source tables, process it, then write the data to target warehouse tables.

# Metadata Management – Metadata Console powered by Ascential MetaStage



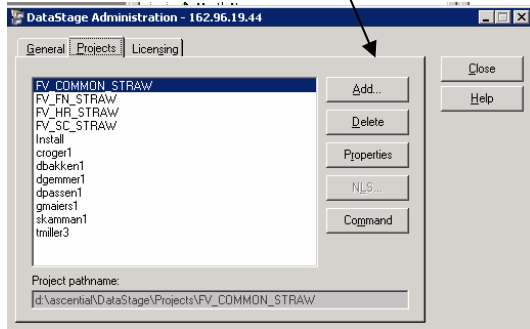
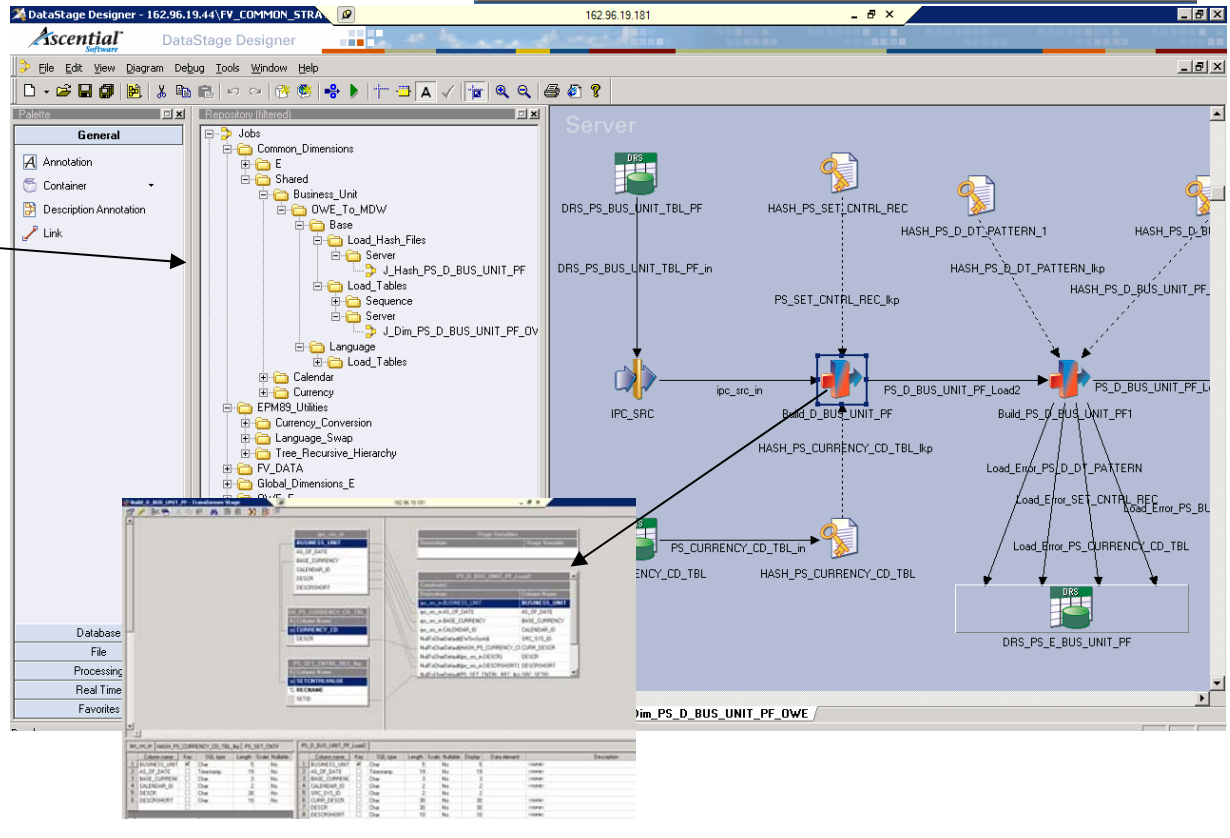
# Manager - Import/Export jobs/metadata



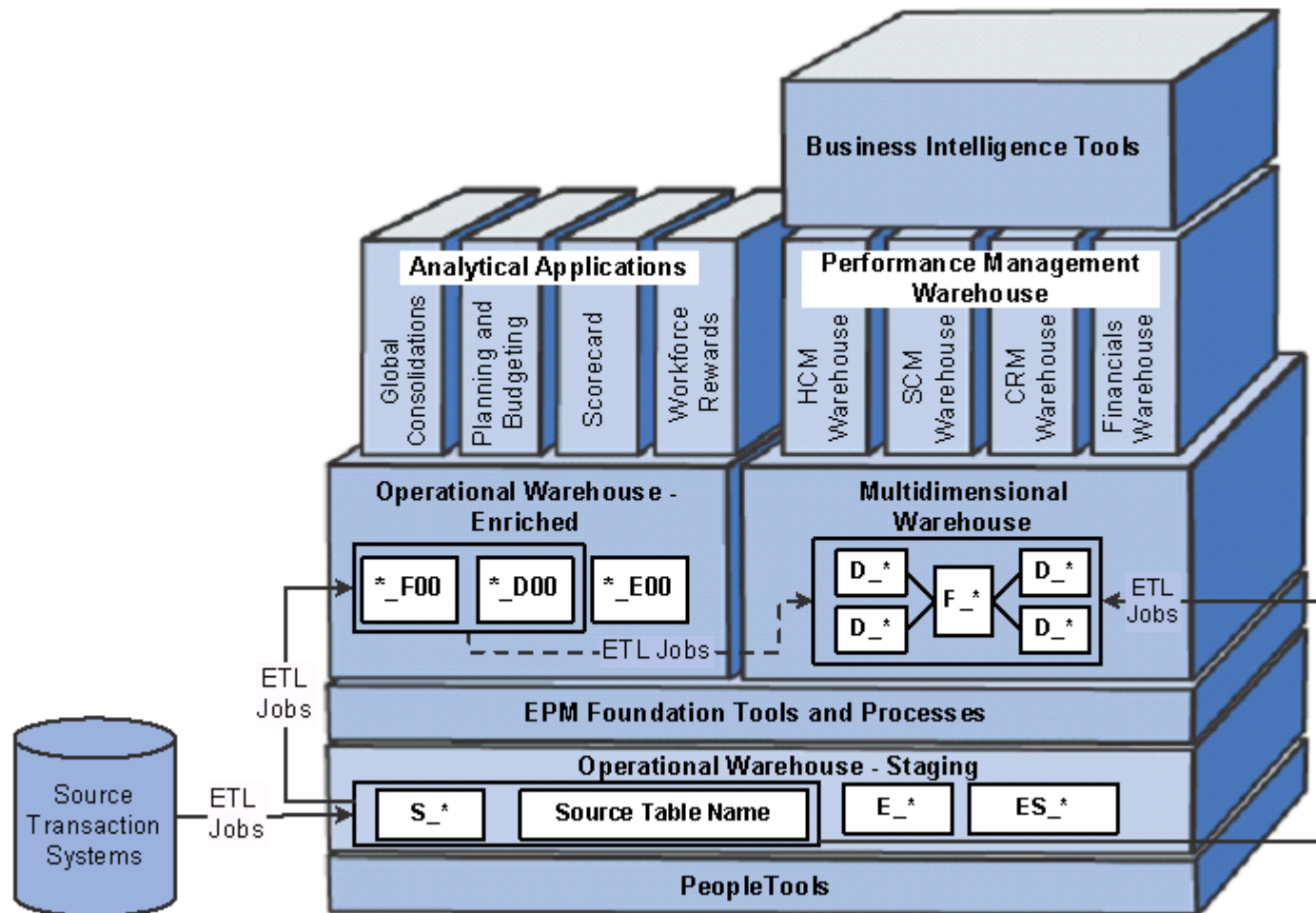
# Director - Run, schedule and review Jobs

# Designer - Create/edit Extract, Transforms, Loads (ETL)

# Administrator - Manage Projects



# EPM Architecture



# PeopleSoft Mart

- *Mart* refers to a PeopleSoft product that contains specific subject areas related to one of the four delivered PeopleSoft functional warehouses. Marts are derived from the MDW and are modeled to support analytic requirements, but not limit you to reporting only in that subject area.
  - Must license a supported reporting tool separately (e.g. Business Objects) to access data – open reporting structure, that supports both ROLAP and MOLAP
  - Can develop OLAP cubes to be used in conjunction with third party supporting OLAP products such as Cognos and Hyperion Essbase.

# Financial Warehouse

- Supports reporting for the following business processes
  - Order Fulfillment
  - Procurement
  - Financial Control and Reporting
  - Project Management
  - Asset Lifecycle Management
  - Financial Control and Reporting
- Datamarts
  - Receivables
  - Payables
  - General Ledger and Profitability
  - Real Estate
  - Advanced Cost Accounting
  - Enterprise Services Automation (ESA)

# Supply Chain Warehouse

- Supports reporting for the following business processes

- Order Fulfillment
- Procurement
- Production

- Datamarts

- Fulfillment and Billing
- Procurement
- Spend
- Inventory
- Manufacturing
- Supply Chain Planning

# HCM Warehouse

- Supports reporting for the following business processes

- Deployment
- Reward
- Development
- Recruiting

- Datamarts

- Workforce Profile
- Compensation
- Learning and Development
- Recruiting

# CRM Warehouse

- Supports reporting for the following business processes
  - Sales
  - Support
  - Marketing
- Datamarts
  - Marketing
  - Sales
  - Service
  - Customer Segment

# Business Objects Integration

- MOLAP Technology
- Sample Metadata delivered (Universes)
- Sample Content – Prompts, Filters, Reports (sometimes referred to as Insight Reports)
- Prebuilt Security Bridges



# Implementation Consideration

- Project Methodology is not a standard waterfall effect. Things are continuously prototyped and redeveloped based on business structure and data responses to business requirements. Please review data warehouse team roles, and methodology to learn more.
- When implementing the warehouse the customer does not have to bring up all data marts, however shared dimensions are assigned or “owned” by specific warehouses. For Instance, Company (Customer) is part of the CRM Warehouse. If Company is something you would like to define, then we would need to scope that into the appropriate phase. We can phase in by subject matter.
- Really a multi-part project – Warehouse and BI tool. Would require additional planning and development for delivery of reports using Business Objects Developer and Web Developer, or some other BI tool of choice. EPM has an open framework, and can be accessed using most industry leading BI tools (Oracle Discoverer, Cognos, Microstrategy, etc.). The advantage of Business Objects is the delivered integration.



# Q & A



# Contact Info

Bill Gibbard  
248.842.0019

[bgibbard@cardinalpointsolutions.com](mailto:bgibbard@cardinalpointsolutions.com)